



ALTERNATORS

**DPDT
CROSSWIRED
POWER ON PINS
3 & 6**

BASIC MODEL:

008-XXX-11

Small Case Version
120VAC

Tall Case Versions
24VAC, 220VAC



UL FILE #E101681

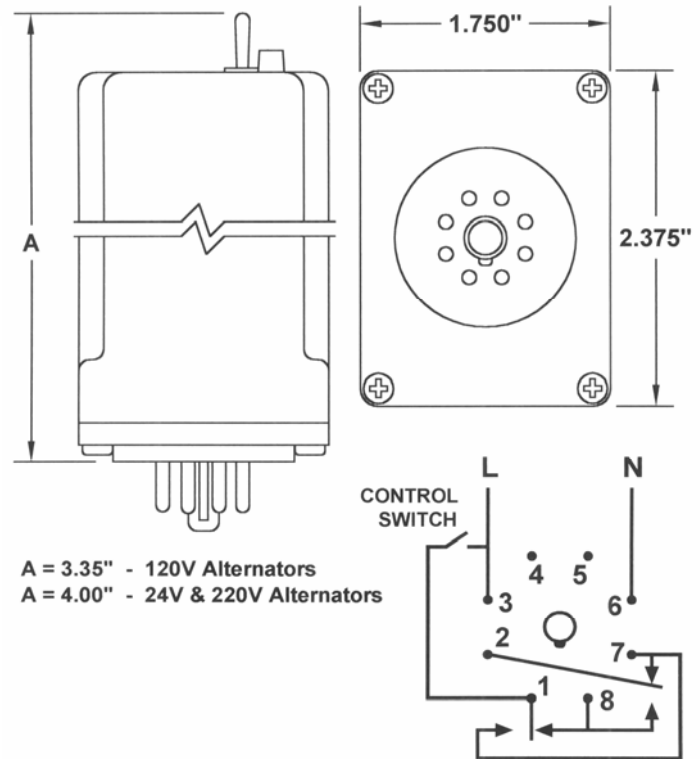


FEATURES:

- Solid State Circuitry
- Surge Protected
- Replaces Mechanical Types
- Plug In Base
- Economical, Easy to Install
- Lead/Lag/Auto Select Switch Option
- Push-To-Test Switch Option

OPERATION

The 008-XXX-11 series of alternators were designed for automatic duplex control of motors or other types of loads. They are available in a single phase voltage of 24, 120 or 220VAC. When power is applied to the alternator, the crosswired DPDT output relay contacts change state each time the control voltage is disconnected. Two options are available offering (1) a lead/lag/automatic selector switch and (2) a push-to-test switch for added convenience in testing or trouble



SPECIFICATIONS

Supply Voltage: 24, 120, 220 VAC - 1 Phase 50/60 Hz
 Output Rating: 10A @ Operating Voltage
 Relay Type: DPDT – Crosswired Contacts
 Power Dissipation: Less Than 1 Watt
 Operating Temp: -20 To +60 °C
 Storage Temp: -45 To +85 °C
 Enclosure: Lexan
 Base: Phenolic

ORDERING INFORMATION

008 - XXX - 11 - XX

Product Type
 Operating Voltage (024, 120, 220)
 Relay/Base Wiring
 Options

S- Lead/Lag Switch
 P- Push To Test
 SP- Lead/Lag and PTT